

INFINITES, REGULATORS, SWITCHES

| Part No | Single Load | Divided Load | Single Pole | Double Pole | 12A | 15A | Integrated Pilot | Separate Pilot | Lit Shaft | Universal Shafts Kit | Solid Shaft |
|---------|-------------|--------------|-------------|-------------|-----|-----|------------------|----------------|-----------|----------------------|-------------|
| TD3-204 | ✓ | | ✓ | ✓ | | | ✓ | | | ✓ | |
| 323-14 | ✓ | | | | ✓ | | | ✓ | | ✓ | |
| 592-00 | ✓ | | ✓ | | ✓ | | | | ✓ | | ✓ |
| 802-00 | | ✓ | ✓ | | ✓ | | | | ✓ | | ✓ |
| M553-14 | ✓ | | ✓ | | | ✓ | ✓ | | | ✓ | |
| M823-14 | | ✓ | ✓ | | | ✓ | | | | ✓ | |
| M3V102 | ✓ | | ✓ | | | ✓ | | | | ✓ | |
| M583-14 | ✓ | | ✓ | | | ✓ | | ✓ | | ✓ | |
| MD3110 | | ✓ | ✓ | | | ✓ | | ✓ | | | ✓ |
| MS4217 | | ✓ | ✓ | | | ✓ | | ✓ | | | ✓ |
| MP101 | ✓ | | ✓ | | | ✓ | | | | | ✓ |

323-14



592-00



TD3-204



M553-14



MP101



M583-14

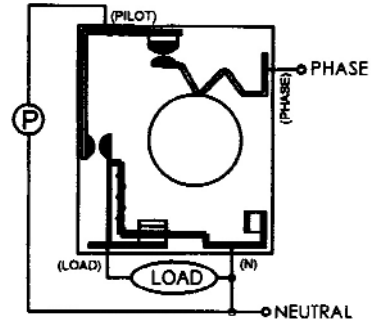


ENERGY REGULATORS (M-SERIES)



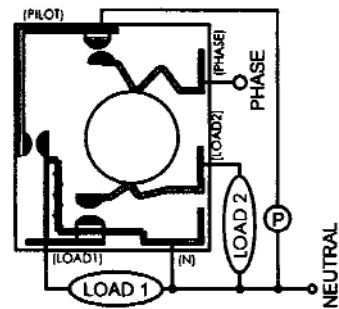
M553-14

**Single Load
Single Pole
Integrated Pilot
Universal Shafts Kit**



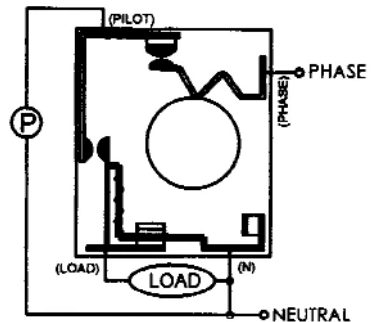
M823-14

**Divided Load
Single Pole
Universal Shafts Kit**



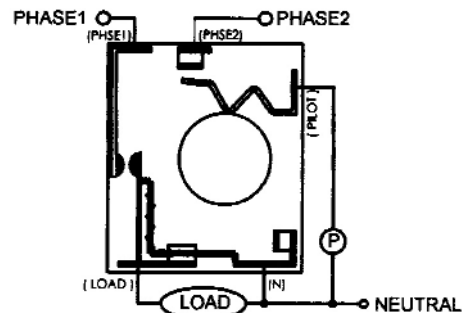
M3V102

**Single Load
Single Pole
75° Detent Lo/Hi
Universal Shafts Kit**



M583-14

**Single Load
Single Pole
Separate Pilot
Universal Shafts Kit**

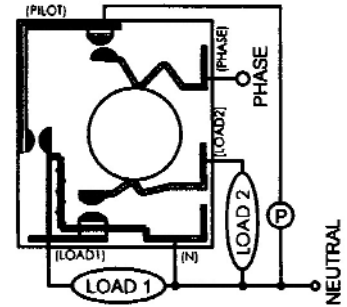


ENERGY REGULATORS (M-SERIES)



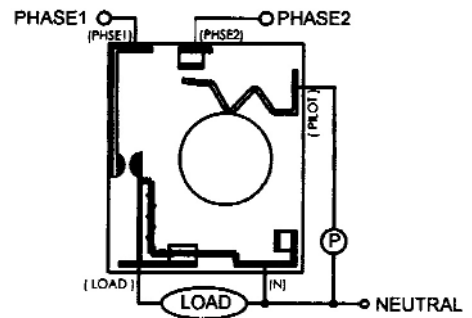
MD3110

**Divided Load
Single Pole
Separate Pilot
Solid Shaft 6mm**



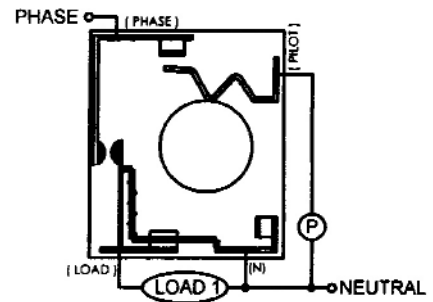
MS4217

**Divided Load
Single Pole
Separate Pilot
Solid Shaft 6mm**



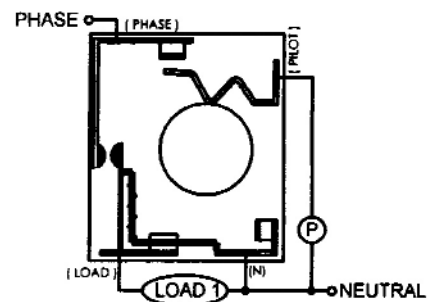
MP101

**Single Load
Single Pole
Solid Shaft 6mm**



MP104

**NOW USE
M553-14**



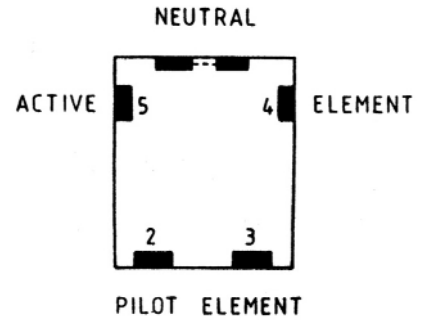
INFINITE HEAT SWITCHES



TD3-204DS

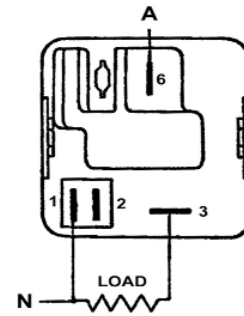
**Energy Regulator Kit
VersaFix**

While Stock Lasts



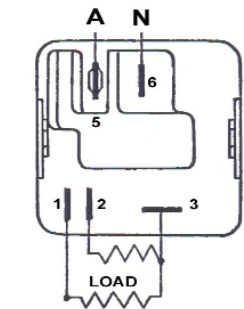
592-00

**Single Load
Single Pole
Illuminated Shaft**



802-00

**Divided Load
Single Pole
Illuminated Shaft
Solid Shaft**

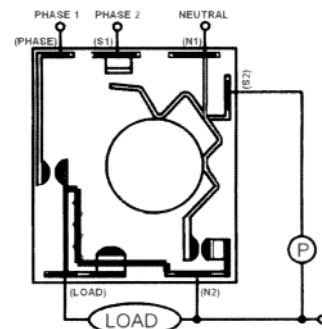


ENERGY REGULATORS (M-SERIES)



**MSA-V01
MSA-312**

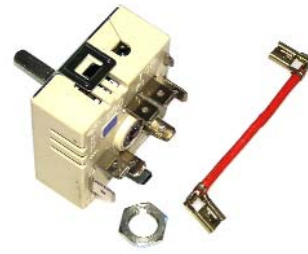
**Isolated Pilot
Solid Shaft
Screw Mounting**



ENERGY REGULATORS



**50-56078-007 Energy Regulator
13A**



**50-56078-008 Energy Regulator Kit
13A**



**46-27266-620
7 Position Switch
16A**



**TYJ6333
Simmerstat
15A**

INFINITE HEAT SWITCHES

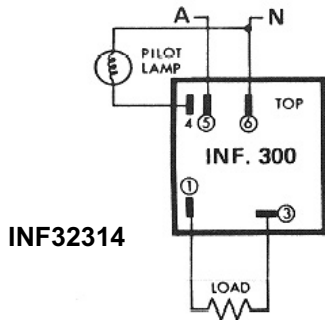


81070 Shaft Adaptor Kit

(Suitable for all switches.
Changes 6mm Ø to required diameter).

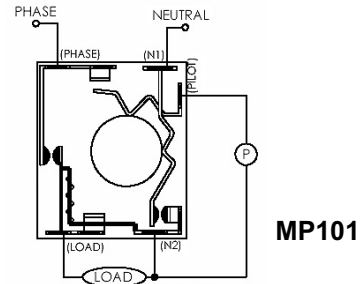
WIRING FROM INFINITES TO M-SERIES

323-14 to MP101



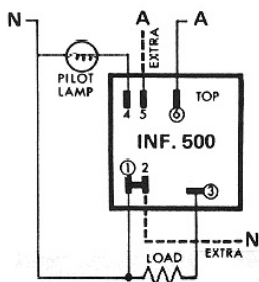
INF32314

- Terminal "1" equals "N2"
- Terminal "3" equals "LOAD"
- Terminal "4" equals "PILOT"
- Terminal "5" equals "PHASE"
- Terminal "6" equals "N1"



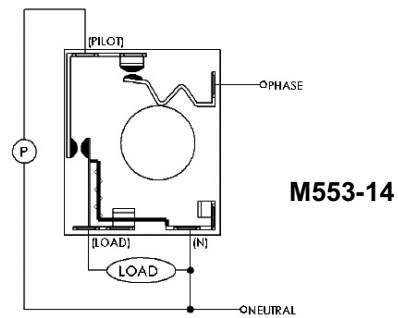
MP101

553-14 to M553-14



INF55314
INF58314

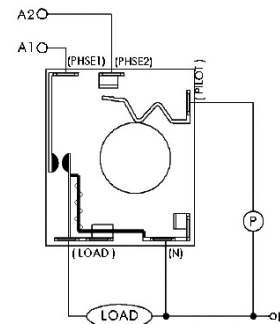
- Terminal "1" equals "N"
- Terminal "3" equals "LOAD"
- Terminal "4" equals "PILOT"
- Terminal "6" equals "PHASE"



M553-14

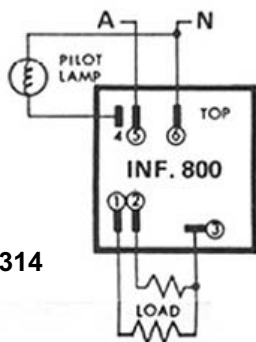
583-14 to M583-14

- Terminal "1" equals "N"
- Terminal "3" equals "LOAD"
- Terminal "4" equals "PILOT"
- Terminal "5" equals "PHSE2"
- Terminal "6" equals "PHSE1"



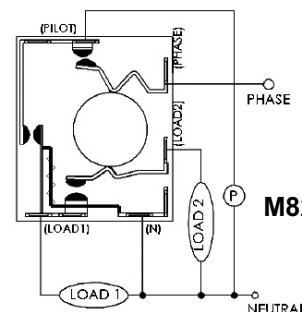
M583-14

823-14 to M823-14



INF82314

- Terminal "1" equals "LOAD1"
- Terminal "2" equals "LOAD2"
- Terminal "3" equals "N"
- Terminal "4" equals "PILOT"
- Terminal "5" equals "PHASE"
- Terminal "6" equals "N"



M823-14



**CONTROLS
FOR ELECTRIC
RANGES**

SECTION
7-1

PAGE 7-1-7

| ORIGINAL PART NUMBER | | | NOW USE |
|---|---|--|---|
| TD3-204 | | | TD3-204 |
| T1-202 T1-205 T3-201 T4-201 T4-208 T5-203 TP-201 TP-207 T5-207 | T1-203 T1-208 T3-203 T4-204 T5-201 T5-204 TP-202 T6-201 T6-205 | T1-204 T1-210 T3-205 T4-205 T5-202 T5-205 TP-205 T6V-700 M3V-700 | M553-14 Universal Kit Energy Regulator |
| T1-102 T3-102 T4-101 T4-106 TP-101 TP-106 | T1-103 T3-103 T4-102 T5-101 TP-102 T6-101 | T1-104 T3-108 T4-105 T5-102 TP-103 T6-102 | M3V102 Universal Kit Energy Regulator |
| TD3-101 TD3-203 TD5-101 TD5-205 TD6-103 TD6V-800 TDP-104 TDP-207 TD3-102 TD3-205 | TD5-202 TD5-207 TD6-201 TDP-101 TDP-201 TD3V-800 TD3-103 TD5-201 TD5-203 TD6-101 | TD6-203 TDP-102 TDP-202 TD2-101 TD3-201 TD5-204 TD6-102 TD6-205 TDP-103 TDP-205 | M823-14 Universal Kit Energy Regulator |
| MD3V-800 | MDP-102 | MDP-105 | |
| TS1-201 TS1-206 TS4-205 TS1-202 MSV600 | TS1-207 TS4-207 TS1-204 TS4-201 MS-101 | TSV-600 TS1-205 TS4-204 | M583-14 Universal Kit Energy Regulator |
| TS4-217 | | | MS4217 Energy Regulator |

**CONTROLS
FOR ELECTRIC
RANGES**



| ORIGINAL PART NUMBER | | | | NOW USE | |
|----------------------|----------|--------|----------|--|---|
| 322-05 | INF32205 | | | TD3-204 | |
| 311-00 | INF31100 | 313-02 | INF31302 | 323-14 Universal Kit Infinite Switch INF32314 | |
| 321-00 | INF32100 | 321-01 | INF32101 | | |
| 322-04 | INF32204 | 323-02 | INF32302 | | |
| 323-03 | INF32303 | 323-06 | INF32306 | | |
| 323-07 | INF32307 | 323-09 | INF32309 | | |
| 323-11 | INF32311 | 323-12 | INF32312 | | |
| 323-14 | INF32314 | 323-16 | INF32316 | | |
| 323-17 | INF32317 | 323-18 | INF32318 | | |
| 323-19 | INF32319 | 324-13 | INF32413 | | |
| 511-00 | INF51100 | 512-03 | INF51203 | | M553-14 Universal Kit Energy Regulator |
| 512-08 | INF51208 | 513-02 | INF51302 | | |
| 513-04 | INF51304 | 513-06 | INF51306 | | |
| 513-07 | INF51307 | 513-09 | INF51309 | | |
| 521-00 | INF52100 | 521-13 | INF52113 | | |
| 522-05 | INF52205 | 522-08 | INF52208 | | |
| 523-02 | INF52302 | 523-03 | INF52303 | | |
| 523-04 | INF52304 | 523-06 | INF52306 | | |
| 523-07 | INF52307 | 523-10 | INF52310 | | |
| 523-11 | INF52311 | 543-02 | INF54302 | | |
| 551-00 | INF55100 | 551-16 | INF55116 | | |
| 552-05 | INF55205 | 552-08 | INF55208 | | |
| 552-11 | INF55211 | 522-17 | INF52217 | | |
| 553-02 | INF55302 | 553-03 | INF55303 | | |
| 553-04 | INF55304 | 553-07 | INF55307 | | |
| 553-09 | INF55309 | 553-12 | INF55312 | | |
| 553-13 | INF55313 | 553-14 | INF55314 | | |
| 553-15 | INF55315 | 554-01 | INF55401 | | |
| 554-06 | INF55406 | | | | |
| 554-18 | INF55418 | 571-00 | INF57100 | | |
| 572-05 | INF57205 | 572-06 | INF57206 | | |
| 572-08 | INF57208 | 573-03 | INF57303 | | |
| 573-04 | INF57304 | 573-07 | INF57307 | | |
| 573-09 | INF57309 | 574-01 | INF57401 | | |
| 581-00 | INF58100 | 582-01 | INF58201 | M583-14 Universal Kit Energy Regulator | |
| 582-02 | INF58202 | 583-03 | INF58303 | | |
| 583-14 | INF58314 | 584-04 | INF58404 | | |
| 812-04 | INF81204 | 812-05 | INF81205 | M823-14 Universal Kit Energy Regulator | |
| 813-02 | INF81302 | 813-03 | INF81303 | | |
| 821-00 | INF82100 | 822-05 | INF82205 | | |
| 822-06 | INF82206 | 822-08 | INF82208 | | |
| 822-18 | INF82218 | 823-02 | INF82302 | | |
| 823-03 | INF82303 | 823-04 | INF82304 | | |
| 823-07 | INF82307 | 823-09 | INF82309 | | |
| 823-11 | INF82311 | 823-12 | INF82312 | | |
| 823-14 | INF82314 | 823-15 | INF82315 | | |
| 823-16 | INF82316 | 823-19 | INF82319 | | |
| 824-01 | INF82401 | | | | |